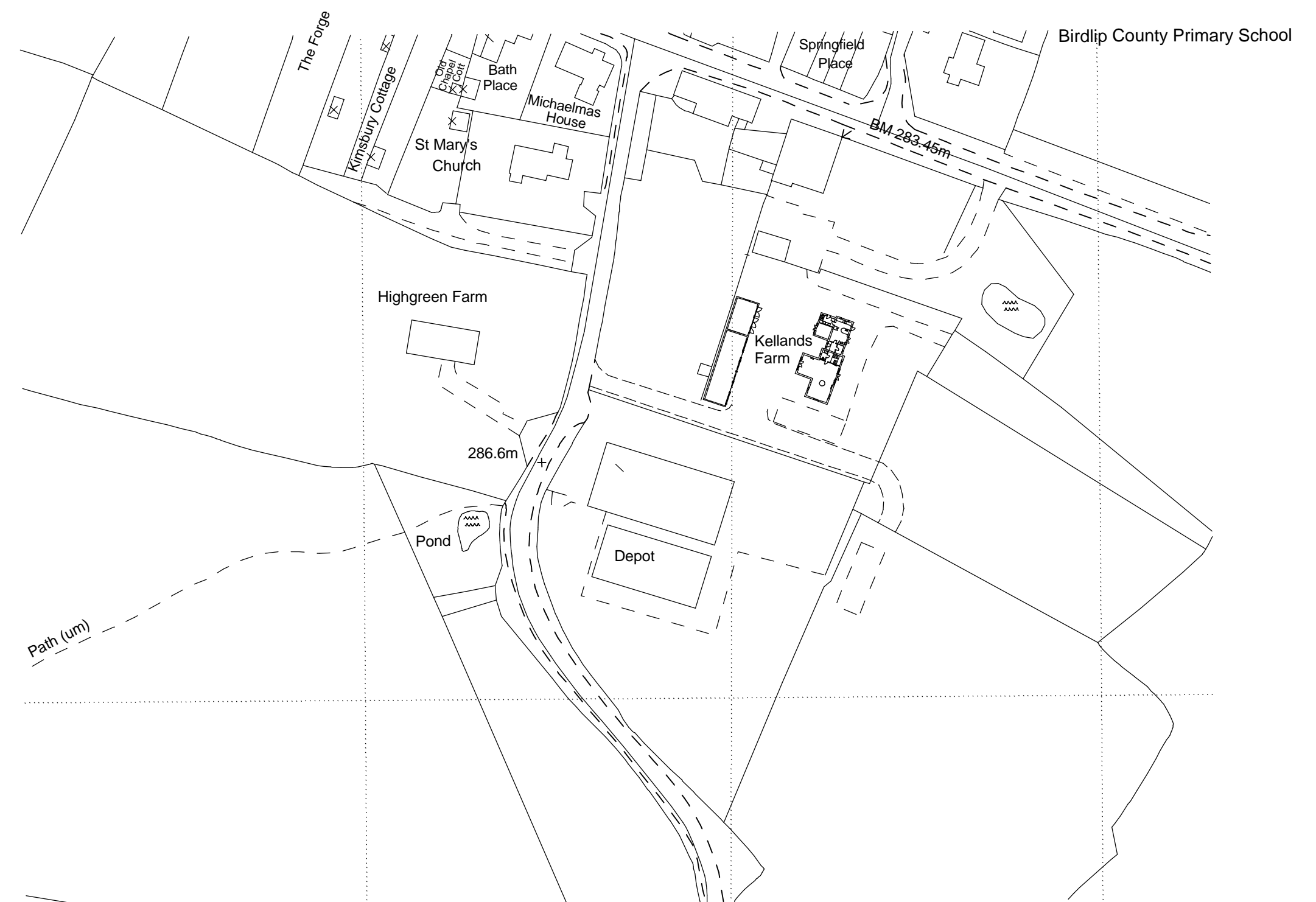
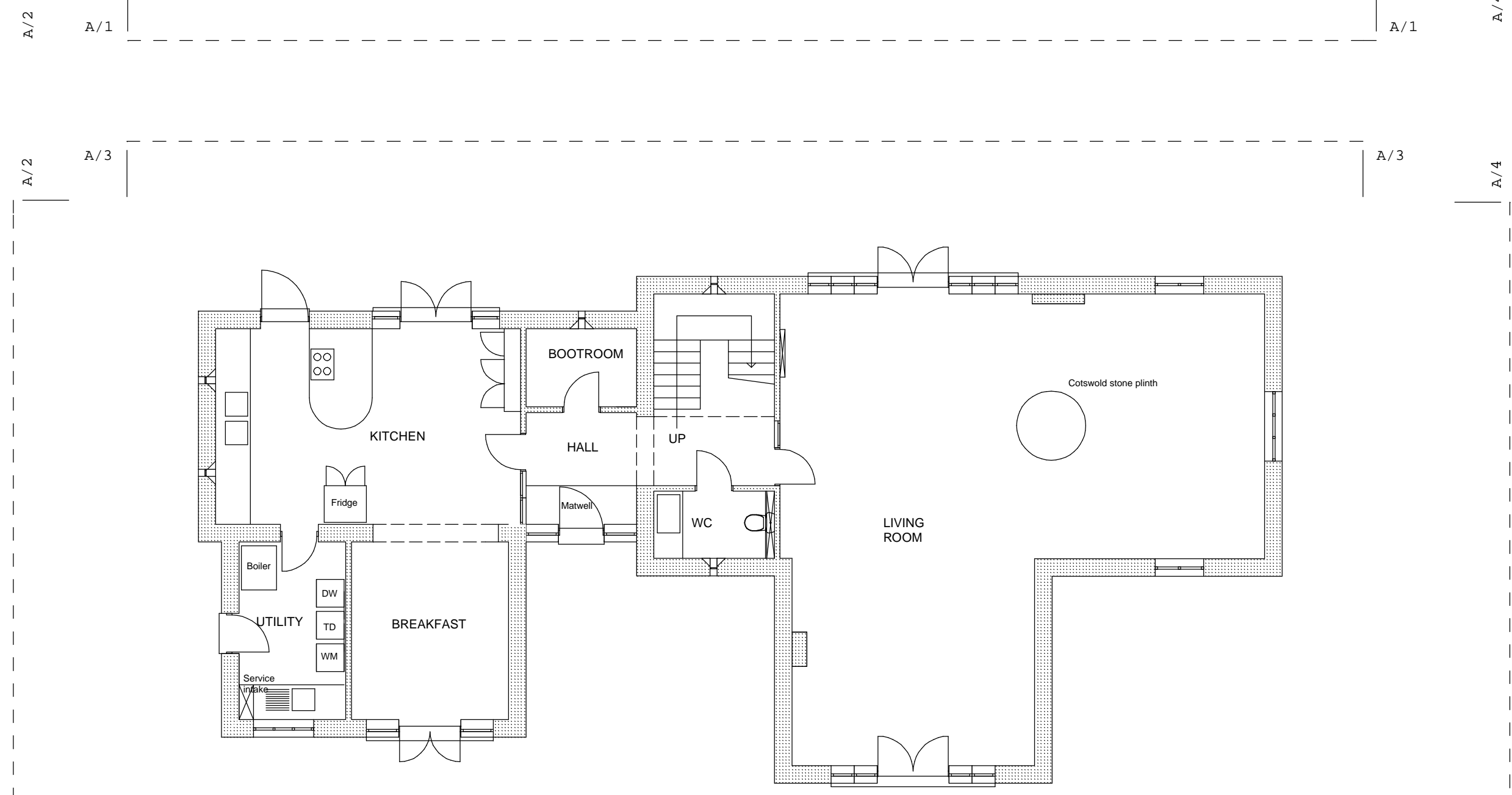


Materials: Walls in reclaimed natural Cotswold stone
 Roof in reconstituted Cotswold stone tiles
 Joinery in weathered oak



rev J		
rev I		
rev H		
rev G		
rev F		
rev E		
rev D		
rev C		
rev B	22.10.2007	OS orientation corrected and elevations retitled
rev A	27.06.2007	Minor amendments
REVISION	DATE	DESCRIPTION

Eliot Walker - Architect
 Field House, Toadsmoor, Stroud GL5 2UL
 Tel 01453 884268 Fax 01453 885763

PROJECT	Kellands Farm, Birdlip, GL4 8JH	
CLIENT	Tony Martin	
TITLE	House - record plans and elevations - B	
DATE	SCALE	DRAWING NO.
October 2007	1 : 100	A-01 Rev B

Copyright : Eliot Walker Architect ©
 Refer any discrepancies to the Architect.